

## Hutchison/MRC Research Centre

# Newsletter

*To undertake world leading research into cancer cell biology that can be translated into clinical practice*

Contents

February 2012

[www.hutchison-mrc.cam.ac.uk](http://www.hutchison-mrc.cam.ac.uk)

Connecting research <i>continued</i>	2
New grant for Shields group	2
Upcoming events	3
Join us at the Cambridge Science Festival	3
Congratulations!	3
Arrivals and departures	3
Hutch scientists in the media	4
Recent publications	5

### Message from the Directors

Welcome to the first issue of the Hutchison/MRC Research Centre newsletter for this year. This edition highlights our strategies for increasing research collaboration and supporting communication between scientists. Some of our researchers have also received substantial news coverage of their latest discoveries, as shown in the media section, and we hope that this continues to help inform the public about our work.

Professor Ashok Venkitaraman  
Professor Bruce Ponder

Joint Directors, Hutchison/MRC  
Research Centre

## Connecting research

Staff and students at the Hutchison/MRC Research take part in a variety of activities to support research collaboration and knowledge sharing within our organisation.

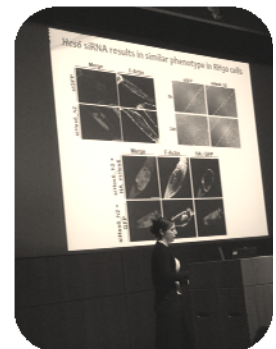


Scientific research rarely happens in isolation, and at the Hutchison/MRC Research Centre we have a number of ways in which we assist our scientists in sharing their latest research and facilitating new collaborations.

As our building is made up of a diverse range of groups from the MRC Cancer Cell Unit and

the University of Cambridge's Department of Oncology, we are particularly aware of ensuring that we have mechanisms in place to learn about each other's work.

One of these is the Research Centre's annual retreat. This usually takes place at the end of each year, and allows post-docs and students from all of our research groups to present their latest work. The retreat also includes a poster session and an opportunity to socialise with colleagues in a setting away from the laboratory.



*Continued on page 2*

## Upcoming Events

### MRC Cancer Cell Unit Annual Lecture

The MRC Cancer Cell Unit Annual Lecture will take place on Wednesday the **9<sup>th</sup> May** at 4pm, in the William Harvey Lecture Theatre in the University's Clinical School. We are delighted to announce that our speaker will be the President of the Royal Society, Sir Paul Nurse.

Further details of this talk will be posted on our website and on talks.cam: <http://talks.cam.ac.uk/show/index/17251> when they become available.

As per usual, the lecture will be free and open to all.



We hope that the retreat offers a chance for scientist to hear about the work of their peers, and gain feedback on their own research.

The Hutchison/MRC Research Centre Post-Doc Society has also been active in providing a way for post-doctoral researchers in the building to interact, and develop their own careers. The Society's latest event was held in December, when around forty researchers gathered to hear CRUK Cambridge Research Institute programme leader Dr Duncan Odom discuss how his career had started and progressed. This was followed by an opportunity for networking, and other social activities.

This event was made possible via the generous support of Qiagen and Sigma Aldrich.



## New grant for Shields group



MRC CCU group leader Dr Jacqui Shields has been awarded a grant of £160K by the Association for International Cancer Research (AICR). The grant will facilitate the expansion of the Shields group, and enable them to further their research on the role of lymphatics in the tumour micro-environment. The grant will support a project on the contribution of tumour-associated lymphatic vessels towards tumour-stroma development and function.

## Join us at the Cambridge Science Festival



The Cambridge Science Festival takes place between the 12<sup>th</sup> and the 25<sup>th</sup> of March. This year the Festival is celebrating the imminent arrival of the Olympics Games, and has adopted the theme of 'Breaking Boundaries'.

The Hutchison/MRC Research Centre team will be at the Festival on **Saturday 17<sup>th</sup> March**, in the Biology Zone on the New Museums Site. Come along to see if you can escape from our cell invasion maze or splat a cancer cell!

The Festival will have over 180 events showcasing the boundaries that are being broken in science, technology, engineering and mathematics. Have a look at the [programme](#) to find full details of these, and how to locate us in the Biology Zone.

Or visit the website for more information: [www.cam.ac.uk/sciencefestival](http://www.cam.ac.uk/sciencefestival)




---

## Congratulations!

We would like to congratulate Paul Russell (Venkitaraman group) on the completion of his PhD with the Open University.

We would also like to congratulate Massimiliano Di Pietro, Johnny Ong, Luke Wylie and Hongqing Liang, from the Fitzgerald, Edwards, and Venkitaraman groups, on all being poster prize winners at the Hutchison/MRC Research Centre annual retreat.

---

## Arrivals and departures

We would like to welcome MRC Career Development Fellows Dr Luisa Pedro, who joins the Shields group, and Dr Meiling Gao, who joins the Martins group, to the building.

---

## Hutch scientists in the media

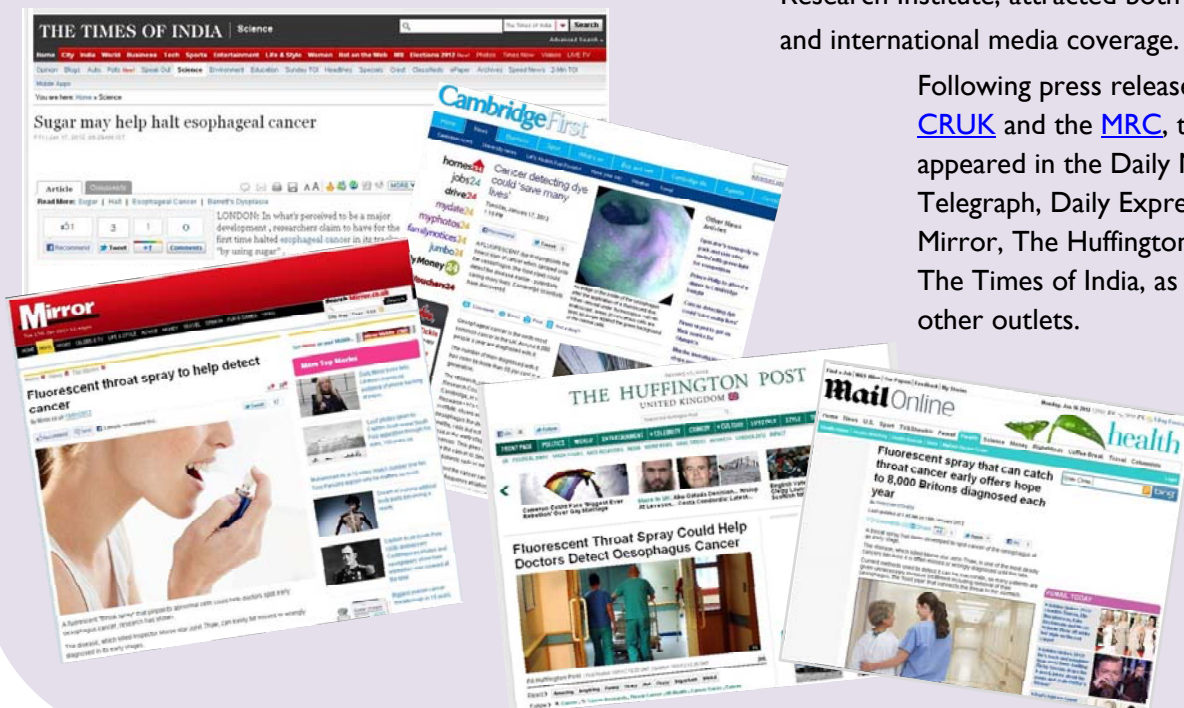
Dr Rebecca Fitzgerald was profiled in the MRC 2011 [Annual Review](#), which was published in November. The Review tells the stories of MRC-funded scientists across the UK who have made some of the most compelling discoveries of the past year.

Dr Rebecca Fitzgerald is also quoted in an article in the Daily Mail on risk factors involved in the development of oesophageal cancer.



A recent publication in Nature Medicine describing research carried out by the Fitzgerald group in collaboration with Dr Kevin Brindle at the CRUK Cambridge Research Institute, attracted both national and international media coverage.

Following press releases from [CRUK](#) and the [MRC](#), this research appeared in the Daily Mail, Daily Telegraph, Daily Express, The Mirror, The Huffington Post, and The Times of India, as well as many other outlets.



## Recent publications

*The role of tandem duplicator phenotype in tumour evolution in high-grade serous ovarian cancer.* Ng CK, Cooke SL, Howe K, Newman S, Xian J, Temple J, Batty EM, Pole JC, Langdon SP, **Edwards PA**, Brenton JD. *J Pathol.* 2011 Dec 19. doi: 10.1002/path.3980. [Epub ahead of print]

*Requirements for clinical implementation of biomarkers in Barrett's esophagus.* Varghese S, Lao-Sirieix P, **Fitzgerald RC**. *Gastroenterology.* 2012 Jan 20. [Epub ahead of print]

*Molecular imaging using fluorescent lectins permits rapid endoscopic identification of dysplasia in Barrett's esophagus.* Bird-Lieberman EL, Neves AA, Lao-Sirieix P, O'Donovan M, Novelli M, Lovat LB, Eng WS, Mahal LK, Brindle KM, **Fitzgerald RC**. *Nat Med.* 2012 Jan 15. doi: 10.1038/nm.2616.

*The emerging role of diffusion-weighted MRI in prostate cancer management.* Lawrence EM, **Gnanapragasam VJ**, Priest AN, Sala E. *Nat Rev Urol.* 2012 Jan 17. doi: 10.1038/nrurol.2011.222. [Epub ahead of print]

*Risk profiles of prostate cancers identified from UK primary care using national referral guidelines.* Serag H, Banerjee S, Saeb-Parsy K, Irving S, Wright K, Stearn S, Doble A, **Gnanapragasam VJ**. *Br J Cancer.* 2012 Jan 31;106(3):436-9. doi: 10.1038/bjc.2011.596.

*DCE and DW MRI in monitoring response to androgen deprivation therapy in patients with prostate cancer: A feasibility study.* Barrett T, Gill AB, Kataoka MY, Priest AN, Joubert I, McLean MA, Graves MJ, Stearn S, Lomas DJ, Griffiths JR, Neal D, **Gnanapragasam VJ**, Sala E. *Magn Reson Med.* 2011 Aug 29. doi: 10.1002/mrm.23062. [Epub ahead of print]

*Role and expression of FRS2 and FRS3 in prostate cancer.* Valencia T, Joseph A, Kachroo N, Darby S, Meakin S, **Gnanapragasam VJ**. *BMC Cancer.* 2011 Nov 11;11:484.

*The role of surgery in high-risk localised prostate cancer.* **Gnanapragasam VJ**, Mason MD, Shaw GL, Neal DE. *BJU Int.* 2011 Sep 27. doi: 10.1111/j.1464-410X.2011.10596.x. [Epub ahead of print]

*The James Lind Alliance approach to priority setting for prostate cancer research: an integrative methodology based on patient and clinician participation.* Lophatananon A, Tyndale-Biscoe S, Malcolm E, Rippon HJ, Holmes K, Firkins LA, Fenton M, Crowe S, Stewart-Brown S, **Gnanapragasam VJ**, Muir KR. *BJU Int.* 2011 Oct;108(7):1040-3. doi: 10.1111/j.1464-410X.2011.10609.x.

*Hes6 Is Required for the Neurogenic Activity of Neurogenin and NeuroD.* Murai K, **Philpott A**, Jones PH. *PLoS One.* 2011;6(11):e27880. Epub 2011 Nov 16.

*Neuroblastoma progress on many fronts: The neuroblastoma research symposium.* Wylie L, **Philpott A**. *Pediatr Blood Cancer.* 2011 Sep 15. doi: 10.1002/pbc.23329. [Epub ahead of print]

*Pattern formation in centrosome assembly.* Mahen R, Venkitaraman AR. Curr Opin Cell Biol. 2012 Jan 13. [Epub ahead of print]

*BRCA2 is required for the maintenance of telomere homeostasis.* Min J, Choi ES, Hwang K, Kim J, Sampath S, Venkitaraman AR, Lee H. J Biol Chem. 2011 Dec 20. [Epub ahead of print]

*The GDI-like solubilizing factor PDE $\delta$  sustains the spatial organization and signalling of Ras family proteins.* Chandra A, Grecco HE, Pisupati V, Perera D, Cassidy L, Skoulidis F, Ismail SA, Hedberg C, Hanzal-Bayer M, Venkitaraman AR, Wittinghofer A, Bastiaens PI. Nat Cell Biol. 2011 Dec 18. doi: 10.1038/ncb2394. [Epub ahead of print]

*Cyclin G1 regulates the outcome of taxane-induced mitotic checkpoint arrest.* Russell P, Hennessy BT, Li J, Carey MS, Bast RC, Freeman T, Venkitaraman AR. Oncogene. 2011 Nov 7. doi: 10.1038/onc.2011.431. [Epub ahead of print]

Hutchison/MRC Research Centre  
Hills Road Cambridge CB2 0XZ

Tel: 01223 763240

Email: [reception@hutchison-mrc.cam.ac.uk](mailto:reception@hutchison-mrc.cam.ac.uk)

[www.hutchison-mrc.cam.ac.uk](http://www.hutchison-mrc.cam.ac.uk)